



Project _____
 Item _____
 Quantity _____
 CSI Section 11400
 Approval _____
 Date _____

NOBLE I-E-LTH

NOBLE I-E-LTH



Standard Features

- Built-in booster heater ensures constant 145° F water to the unit for outstanding performance
- Electromechanical timer with multi-cycle timer (Normal, Medium, Heavy)
- Internal sump design
- Built-in waste accumulator
- Delimer switch for easy removal of hard water deposits
- Removable scrap screen
- Air gap instead of vacuum breaker
- Door switch
- Convenient top mounted controls
- Auto start
- Interchangeable upper and lower stainless steel wash / rinse arms
- Wash / rinse thermometer
- Low chemical indicator lights
- Stainless steel adjustable bullet feet

Mandatory Specs

Specify voltage _____

Options

- Water Hammer Arrestor
- Scaltrol
- False Panel
- Flanged Feet
- Audible Low Chemical Alarm
(available only on 115v models)

Accessories

- 36-Compartment Rack
 - 4-1/8" tall (105 mm)
 - 5-5/8" tall (143 mm)
 - 7" tall (178 mm)
- Combination Rack
- Peg Rack

Specifications

Uses 1.02 gallons (3.9 liters) water per rack

39 racks per hour (Normal cycle)

Single point electrical connection

Self-draining stainless steel pump eliminates soil/detergent carryover between wash and rinse cycles

Fill and Dump design disposes of dirty water, replacing it with a fresh water rinse every cycle

Field convertible from straight to corner and vice versa for flexible installations and applications

17-1/4" (438 mm) vertical inside clearance

Built-in chemical pumps and priming switches

Large removable scrap screen

Durable stainless steel construction



Intertek

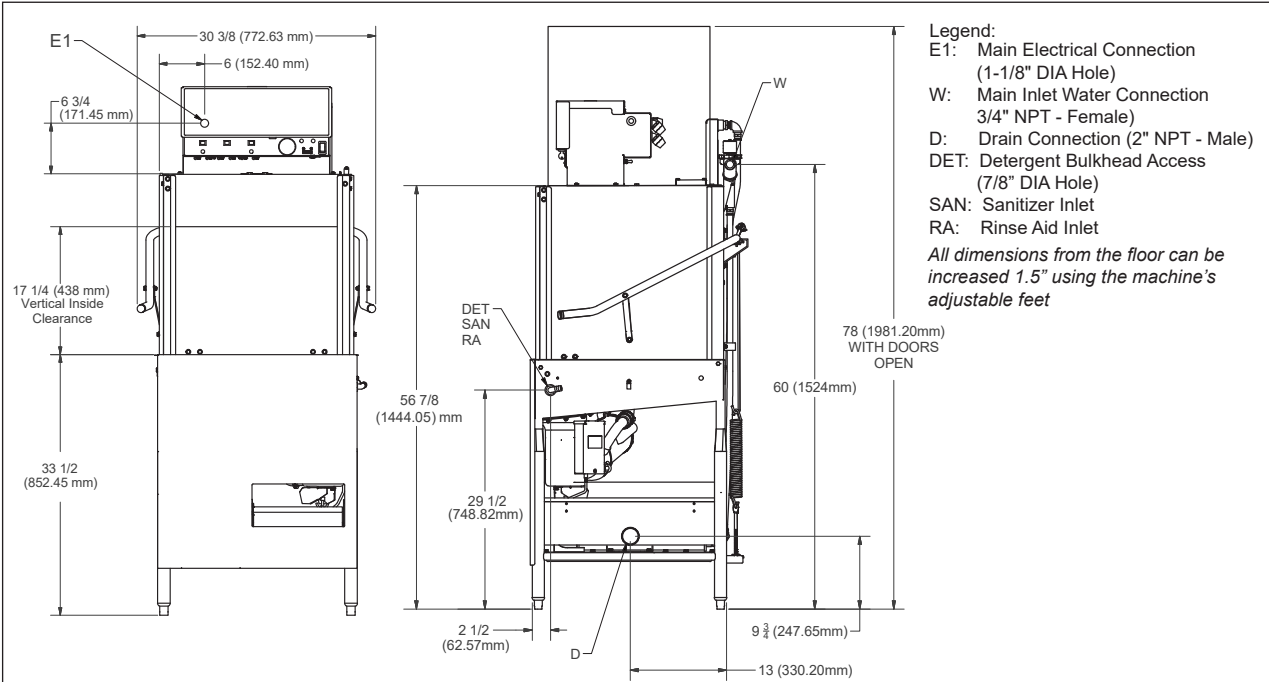


Intertek

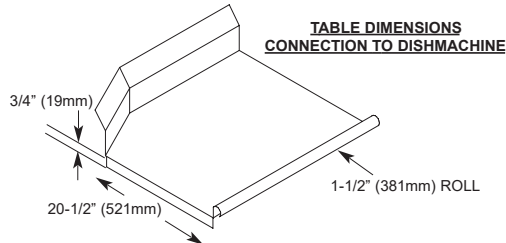
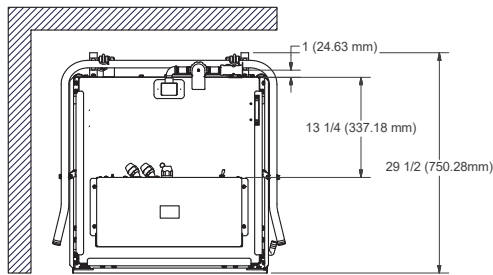




NOBLE DG-E



Legend:
 E1: Main Electrical Connection (1-1/8" DIA Hole)
 W: Main Inlet Water Connection 3/4" NPT - Female
 D: Drain Connection (2" NPT - Male)
 DET: Detergent Bulkhead Access (7/8" DIA Hole)
 SAN: Sanitizer Inlet
 RA: Rinse Aid Inlet
All dimensions from the floor can be increased 1.5" using the machine's adjustable feet



MODEL NO.	MACHINE DIMENSIONS				DRAIN HEIGHT	SHIPPING INFORMATION					
	HEIGHT	WIDTH	WIDTH BETWEEN DISHTABLES	DEPTH		WEIGHT	CLASS	CUBE	HEIGHT	WIDTH	DEPTH
NOBLE I-E-LTH	68-1/2" (1740 mm)	30-3/8" (772 mm)	25-1/4" (641 mm)	29-1/2" (749 mm)	9-3/4" (248 mm)	300 lbs (136 kg)	300	58.15 cu. ft.	72.5" (1842 mm)	33" (838 mm)	42" (1067 mm)

OPERATING CAPACITY				
Racks per Hour	Normal	Medium	Heavy	
	39	24	10	
OPERATING CYCLE (seconds)				
Wash	42	100	280	
Rinse	25	25	25	
Dwell	20	20	20	
Total Cycle	87	145	325	

WATER REQUIREMENTS		
	MINIMUM	RECOMMENDED
Inlet Temperature	110°F (44 °C)	120°F (49 °C)
Wash Operating Temperature	120°F (49 °C)	140°F (60 °C)
Rinse Operating Temperature	120°F (49 °C)	145°F (63 °C)
Gallons per Hour	39.78 gal (15.6 L)	
Gallons per Rack	1.02 gal (3.86 L)	
Waterline Size IPS (minimum)	3/4"	
Drainline Size IPS (minimum)	2"	

APPROXIMATE LOAD AMPS	
Power Supply	AMPS
208V/60HZ/1PH	48.3
208V/60HZ/3PH	30.0
230V/60HZ/1PH	52.8
230V/60HZ/3PH	32.7

PERFORMANCE CAPABILITIES	
Flow Pressure (PSI)	20 ±5
Wash Pump Motor Horsepower	1
Pump Capacity (GPM)	55
Minimum Chlorine Required (PPM)	50

HOW TO SPECIFY: NOBLE I-E-LTH

www.nobleproducts.biz

NO-0018 [12/14/17]