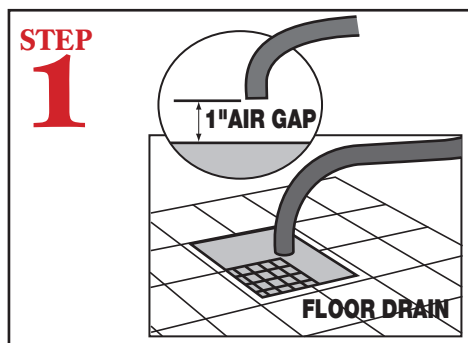
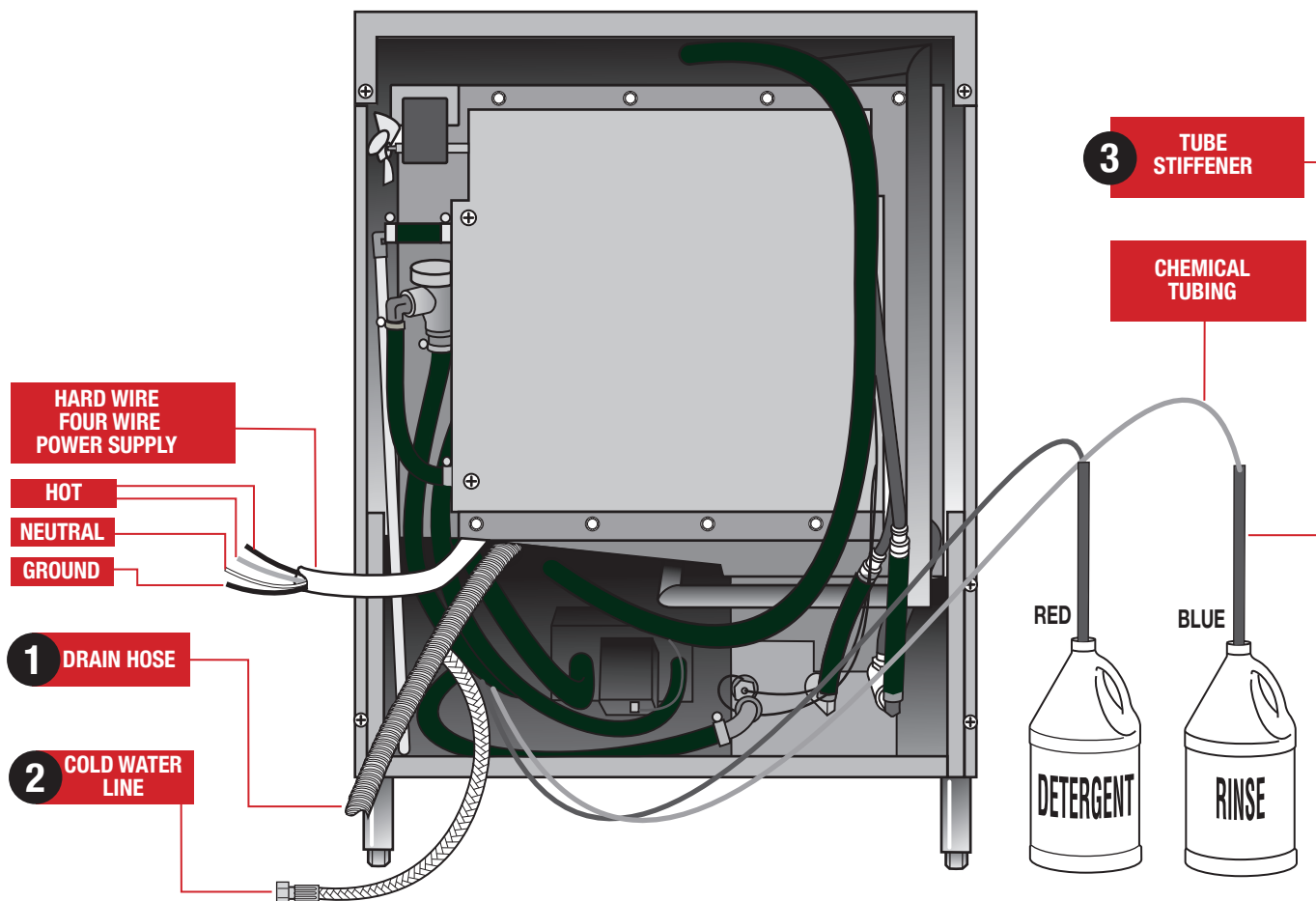


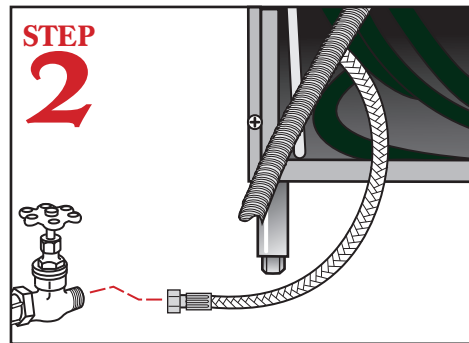
181-VL Quick Setup Instructions

WARNING: Electrical and plumbing connections need to be made by a qualified service technician and comply with all available Federal, State and Local Health, Electrical, Plumbing and Safety codes.

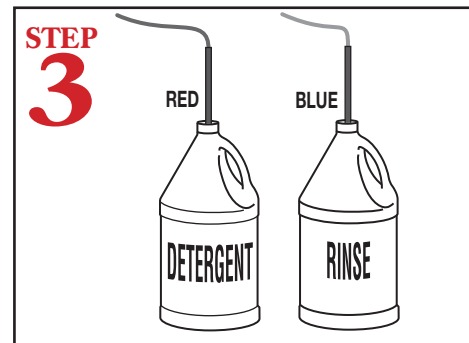
181-VL REAR VIEW



Connect the drain hose to floor drain. The floor drain must have a 1 inch air gap between drain hose and floor drain.



Connect dishmachine to cold water source.

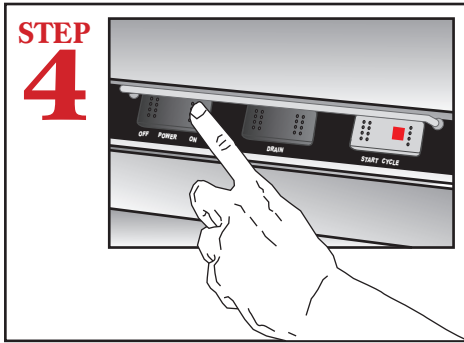
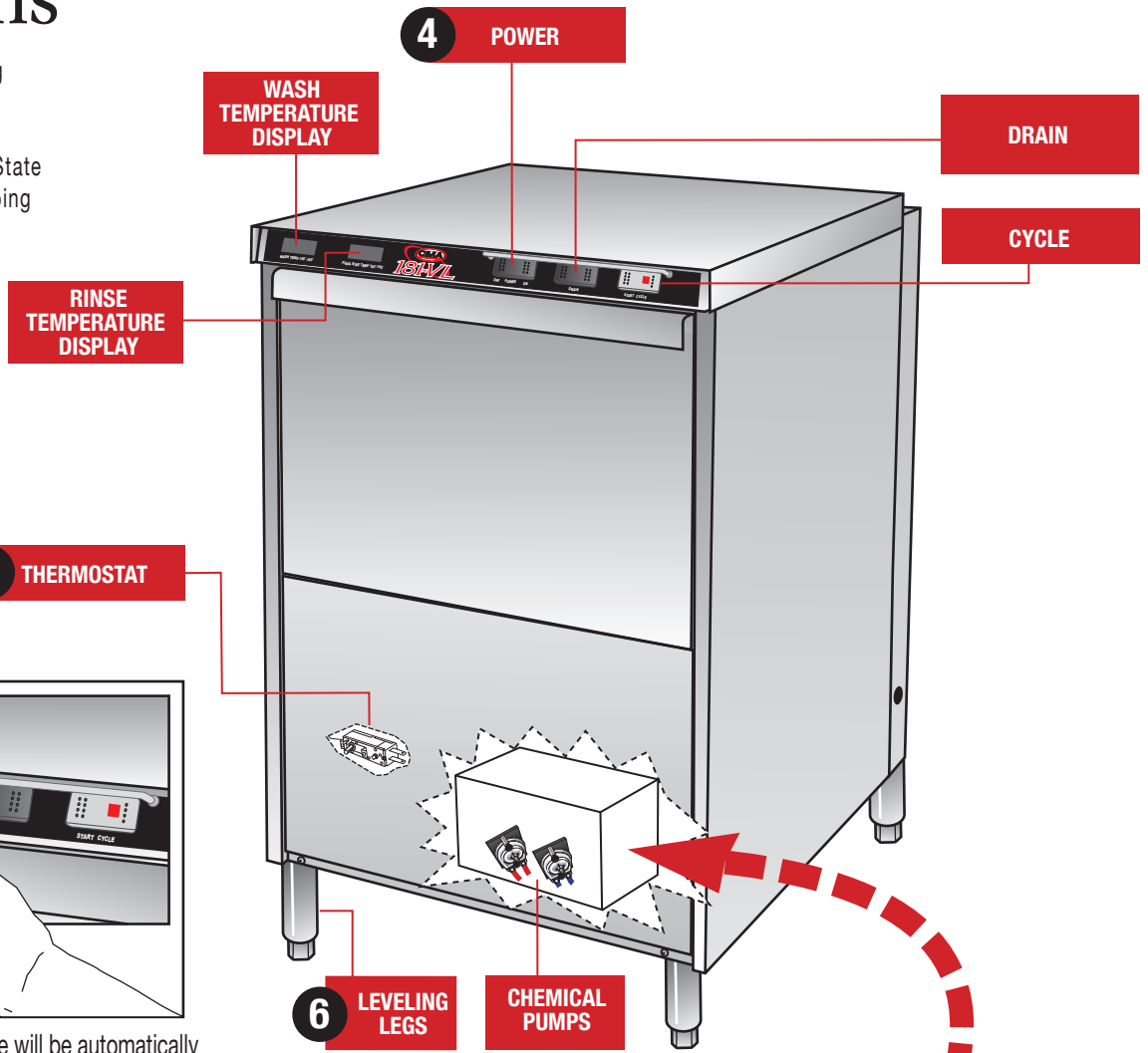


Insert tube stiffener with chemical tubing into corresponding chemical dispensers.

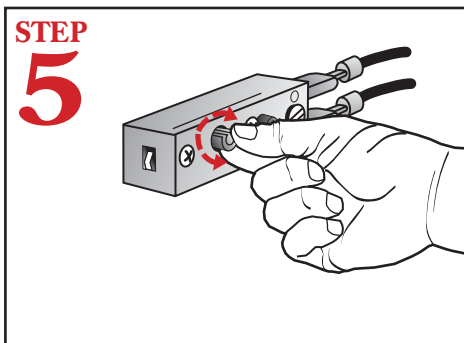
181-VL Quick Setup Instructions

181-VL FRONT VIEW

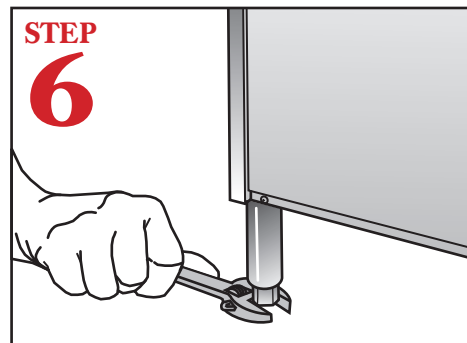
WARNING: Electrical and plumbing connections need to be made by a qualified service technician and comply with all available Federal, State and Local Health, Electrical, Plumbing and Safety codes.



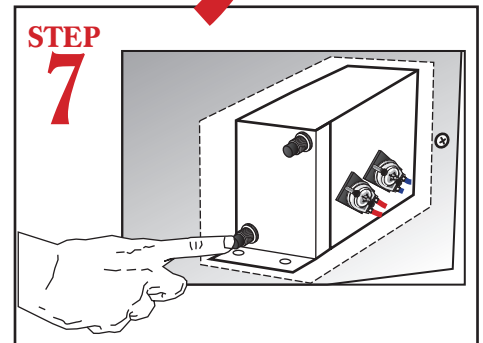
Turn on power and the machine will be automatically filled to correct level. No need to hold. Due to slow fill rate this step may have to be repeated.



If necessary adjust the temperature by turning the adjustment stem on the thermostat clockwise to increase.



Level dishmachine by adjusting leveling legs. Dishmachine must be level front to back and side to side.



Press and hold down primer switches until product is discharging into the dishmachine.